

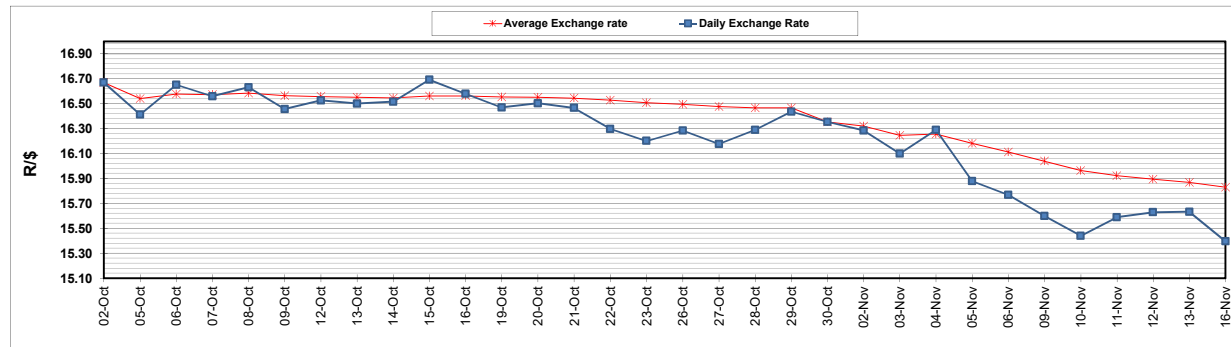
	PETROL 95 ULP	PETROL 93 ULP & LRP	DIESEL 0.05%	DIESEL 0.005%	ILL. PAR.
GAUTENG PUMP PRICE (SA c/l) AS FROM 04/11/2020	1,459.000	1,439.000	-	-	-
WHOLESALE PRICE (SA c/l) AS FROM 04/11/2020	-	-	1,225.560	1,227.960	655.828
SINGLE NATIONAL MAXIMUM RETAIL PRICE	-	-	-	-	818.000
BASIC FUEL PRICE - 16/11/2020 (SA c/l)	482.080	474.120	490.039	491.389	469.376
PRESS RELEASE CONTRIBUTION TO BFP 04/11/2020 - 16/11/2020 (SA c/l)	506.470	496.470	474.630	477.030	451.128
UNIT OVER/(UNDER) RECOVERY - 16/11/2020 (SA c/l)	24.390	22.350	(15.409)	(14.359)	(18.248)
AVERAGE BASIC FUEL PRICE 30/10/2020 - 16/11/2020	478.311	470.008	474.762	477.305	458.053
AVERAGE UNIT OVER/(UNDER) RECOVERY 30/10/2020 - 16/11/2020	34.909	33.212	2.868	2.475	(10.675)

ANALYSIS MOVEMENT OF AVERAGE OVER/(UNDER) RECOVERY

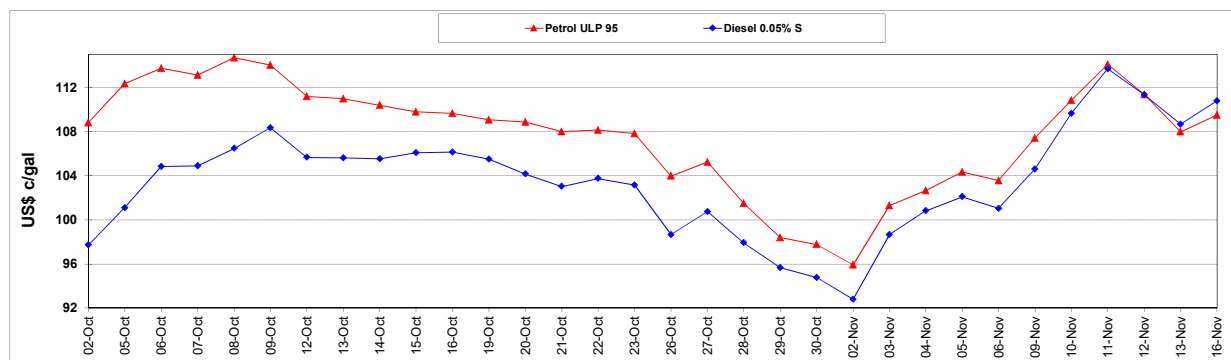
	PETROL 95	PETROL 93	DIESEL 0.05%	DIESEL 0.005%	ILL. PAR.
- MOVEMENT IN INTERNATIONAL PRODUCT PRICES	15.717	14.353	(16.182)	(16.677)	(29.054)
- MOVEMENT IN EXCHANGE RATE	19.192	18.859	19.050	19.152	18.379
AVERAGE UNIT OVER/(UNDER) RECOVERY 30/10/2020 - 16/11/2020	34.909	33.212	2.868	2.475	(10.675)

R/\$ EXCHANGE RATE - (R/\$15.3963 - 16/11/2020)

EXCHANGE RATE USED IN BASIC FUEL PRICE



INTERNATIONAL PRODUCT PRICES OF BASKET USED IN BASIC FUEL PRICE



BASIC FUEL PRICE IN SA CENTS PER LITRE

